

SHML135

135kg Hydraulic Scissor Motorcycle Lift

OWNER'S MANUAL

SPECIFICATIONS

Max.Capacity	135 kg
Max Height	870 mm
Min Height	350 mm
Platform Size	410x340mm
Net Weight	27 kg
Gross Weight	29 kg

CAUTION

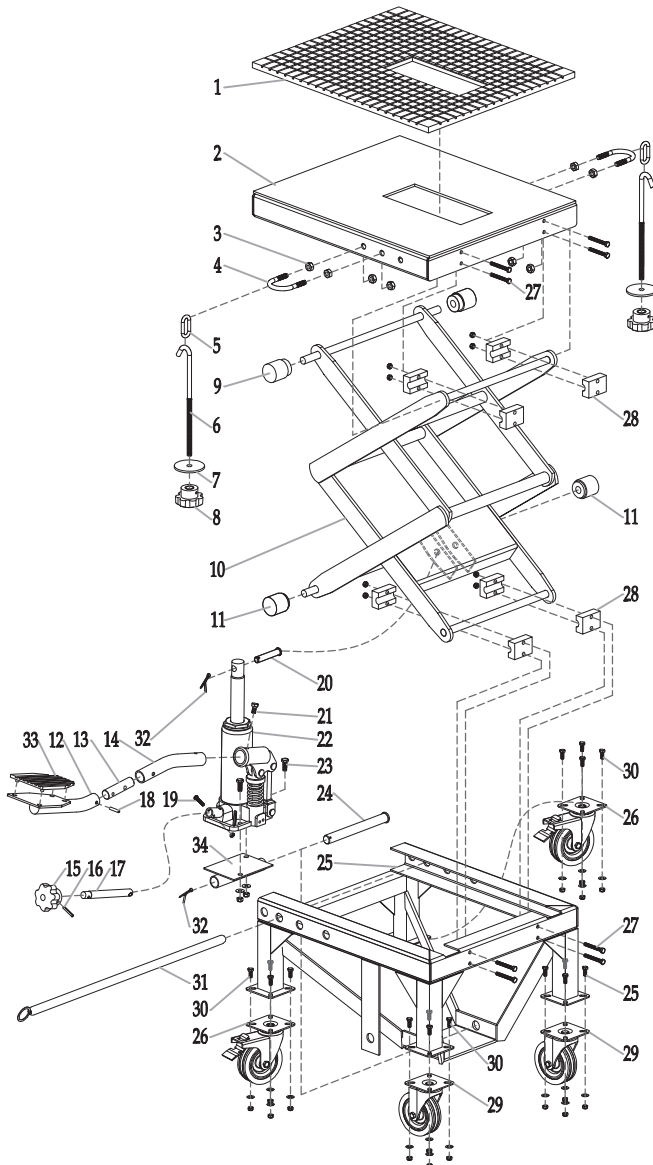
1. The maximum load is 135kgs. DO NOT exceed this rated capacity.
2. Use this lift for lifting purpose only. DO NOT use it for any other purpose that it is not designed to perform.
3. Keep children and unauthorised persons away from work area.
4. Only use this lift on a surface that is stable, dry, not slippery and capable of sustaining the load, keep the surface area clean, tidy and free from unrelated materials and ensure that there is adequate lighting.
5. Before lifting ensure the motorcycle is adequately secured to the lifting platform.
6. When the platform has been lifted to the working height, ensure the lock bar is engaged to prevent accidental lowering.
7. Always keep your hands and feet away from moving parts.
8. When work is done, check under the lift and motorcycle to ensure that there are no obstructions and that it is safe to the unit. Remove the locking bar and then SLOWLY turn the release valve to GENTLY lower the lift.

9. DO NOT allow untrained persons to operate the lift.
10. DO NOT make any modifications to this motorcycle lift .
11. DO NOT expose the lift to rain or snow.
12. Ensure that you read, understand and apply the safety instructions and warnings before use. Failure to heed these instructions may result in property damage and/or personal injury.

MAINTENANCE

1. When not in use, the lift must be stored in the lowest position in a dry location to minimise ram and piston corrosion.
2. Keep the lift clean and wipe off any oil or grease. Lubricate all moving parts.
3. Periodically check the ram and piston for signs of corrosion. Clean exposed areas with a clean oiled cloth.
4. Before each use check all parts. If any part of the lift is damaged or suspect, remove the lift from service and take necessary action to repair.
5. When lift efficiency drops, open the release valve and pump the lift foot pedal rapidly 5 to 10 times to purge away air from the hydraulic system.

PARTS LIST AND ASSEMBLY DIAGRAM



Part#	Description	QTY
1	Rubber Pad	1
2	Upper Frame	1
3	Damping Nut M8	8
4	U-Bolt	2
5	Hasp	2
6	J-Hook	2
7	Washer	2
8	Knob	2
9	Upper Roller	2
10	Lifting Arm Assy	1
11	Lower Roller	2
12	Foot Pedal 1	1
13	Connector	1
14	Foot Pedal 2	1
15	Knob	1
16	Pin	1
17	Pin Shaft	1
18	Pin	1
19	Screw M4x20 & Nut	1
20	Pin	1
21	Bolt M6x12	1
22	Pump	1
23	Bolt M6x20	2
	Washer $\phi 6$	2
	Lock Nut M6	2
24	Pin	1
25	Base Frame	1
26	Swivel Caster With Brake	2
27	Bolt M5x40	8
	Lock Nut M5	8
28	Fixing Block	8
29	Swivel Caster	2
	Bolt M5x12	16
	Washer $\phi 5$	16
30	Lock Nut M5	16
	Locking Bar	1
31	Locking Bar	1
32	Cotter Pin	2
33	Foot Pedal Pad	1
34	Connecting Plate	1



SGS Engineering (UK) Ltd
Unit 1 West Side Park
Raynesway
Derby, DE21 7AZ

EC Declaration of Conformity

This is an important document and should be retained

MANUFACTURER'S NAME: SGS Engineering (UK) Ltd
TYPE OF EQUIPMENT: Hydraulic Scissor Motorcycle Lift
PART NUMBER: SHML135

APPLICATION OF EC COUNCIL DIRECTIVES / STANDARD:

Machinery Directive: 2006/42/EC
EN ISO 12100:2010
EN 1493:2022

I, the undersigned, hereby declare that the equipment specified above conforms to the above European Communities Directive(s) and Standard(s).

PLACE: Derby, UK

DATE: 01 MAY 2025

A handwritten signature in black ink, appearing to read 'Neil Sansom', written over a white rectangular background.

(Signature)

Neil Sansom
CEO





SGS-ENGINEERING.COM